

Cheetah HC 60M 330-350 Watt

N-TYPE MONO CRYSTALLINE MODULE

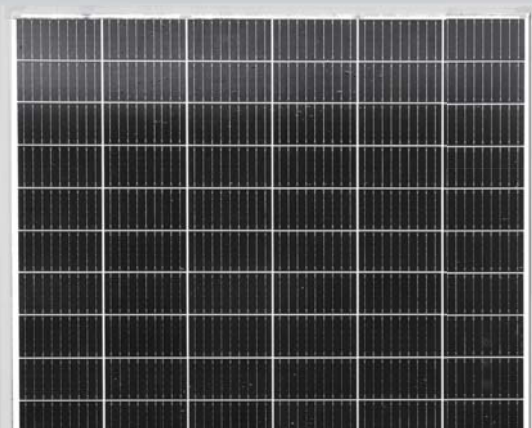
Positive power tolerance of 0~+5W

- Half Cell
- N-Type Mono 60 Cell

(Made in China/Malaysia/U.S/Vietnam)



N-type



KEY FEATURES



N-type HOT Technology

N-type HOT technology makes 20.74% mono-facial module efficiency



9 Busbar Solar Cell

9 busbar solar cell adopts new technology to improve the efficiency of modules, offers a better aesthetic appearance, making it perfect for rooftop installation



PID Resistance

Excellent Anti-PID performance guarantee limited power degradation



Better Low-light Performance

Advanced glass and cell surface textured design ensure excellent performance in low-light environment



Saving BOS Cost

Designed for high voltage systems of up to 1500 VDC, saving BOS cost



Durability Against Extreme Environmental Conditions

High salt mist and ammonia resistance certified by TUV NORD



Higher Lifetime Power Yield

Superior Warranty: 30 years performance warranty;
1% First year degradation 0.4% Linear power degradation



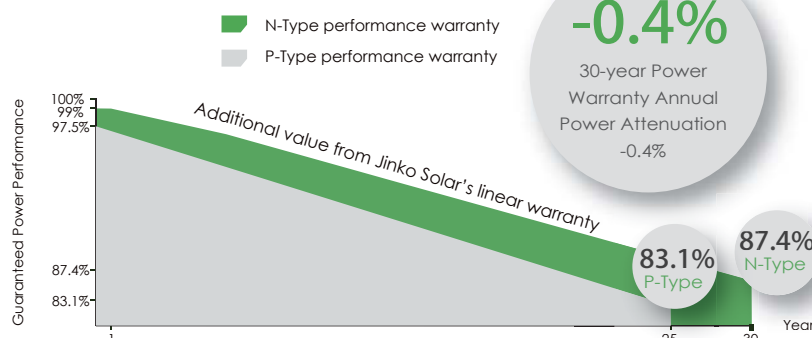
LINEAR PERFORMANCE WARRANTY



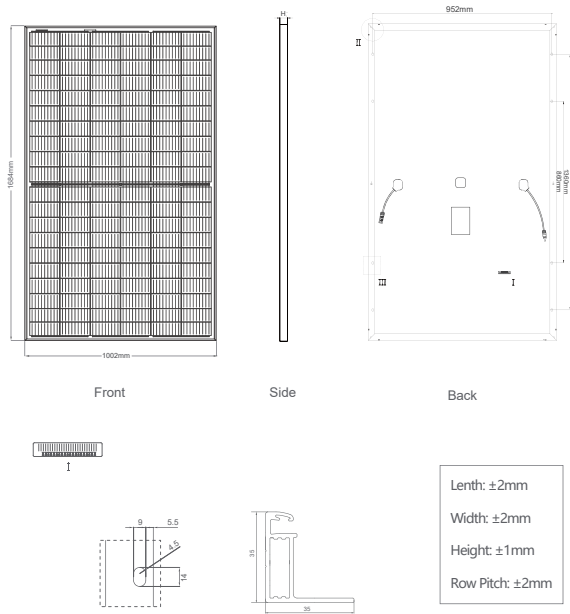
15 Year Product Warranty 30 Year Linear Power Warranty
0.4% Annual Degradation Over 30 years

ISO9001:2015, ISO14001:2015, ISO45001:2018
certified factory

IEC61215, IEC61730 certified product



Engineering Drawings

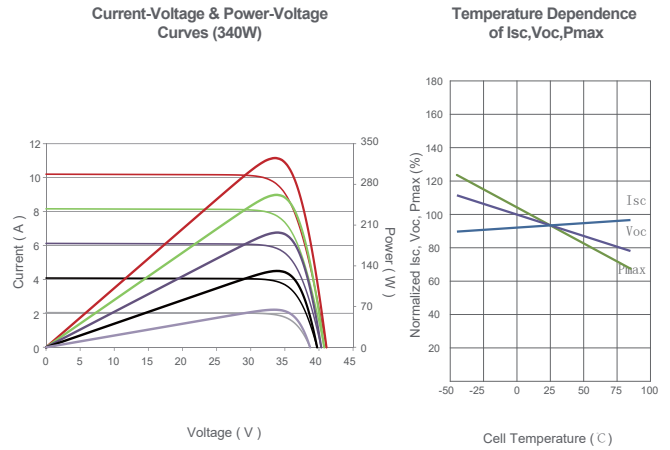


Packaging Configuration

(Two pallets = One stack)

31pcs/pallet, 62pcs/stack, 806pcs/40'HQ Container

Electrical Performance & Temperature Dependence



Mechanical Characteristics

Cell Type	N-type 158.75×158.75mm
No. of Half-cells	120 (6×20)
Dimensions	1684×1002×35mm (66.30×39.45×1.38 inch)
Weight	19.0 kg (41.9 lbs)
Front Glass	3.2mm, Anti-Reflection Coating, High Transmission, Low Iron, Tempered Glass
Frame	Anodized Aluminium Alloy
Junction Box	IP67 Rated
Output Cables	TÜV 1x4.0mm², (+) 290mm, (-) 145mm or Customized Length
Fire Rating	Class C
Connector	JK03M/2B, MC4 EV02

SPECIFICATIONS

Module Type	JKM330N-60H-MBB-V		JKM335N-60H-MBB-V		JKM340N-60H-MBB-V		JKM345N-60H-MBB-V		JKM350N-60H-MBB-V	
	STC	NOCT	STC	NOCT	STC	NOCT	STC	NOCT	STC	NOCT
Maximum Power (Pmax)	330Wp	246Wp	335Wp	250Wp	340Wp	254Wp	345Wp	257Wp	350Wp	261Wp
Maximum Power Voltage (Vmp)	34.03V	31.95V	34.15V	31.98V	34.28V	32.09V	34.40V	32.23V	34.52V	32.38V
Maximum Power Current (Imp)	9.70A	7.70A	9.81A	7.81A	9.92A	7.90A	10.03A	7.98A	10.14A	8.06A
Open-circuit Voltage (Voc)	40.17V	37.83V	40.32V	37.98V	40.47V	38.12V	40.62V	38.26V	40.77V	38.4V
Short-circuit Current (Isc)	10.30A	8.32A	10.36A	8.37A	10.42A	8.42A	10.48A	8.46A	10.54A	8.51A
Module Efficiency STC (%)	19.56%		19.85%		20.15%		20.45%		20.74%	
Operating Temperature (°C)	-40°C~+85°C									
Maximum System Voltage	1500VDC (IEC)									
Maximum Series Fuse Rating	20A									
Power Tolerance	0~+5W									
Temperature Coefficients of Pmax	-0.34%/°C									
Temperature Coefficients of Voc	-0.28%/°C									
Temperature Coefficients of Isc	0.048%/°C									
Nominal Operating Cell Temperature (NOCT)	45±2°C									

STC: Irradiance 1000W/m² Cell Temperature 25°C AM=1.5

NOCT: Irradiance 800W/m² Ambient Temperature 20°C AM=1.5 Wind Speed 1m/s

* Power measurement tolerance: -3~+3%